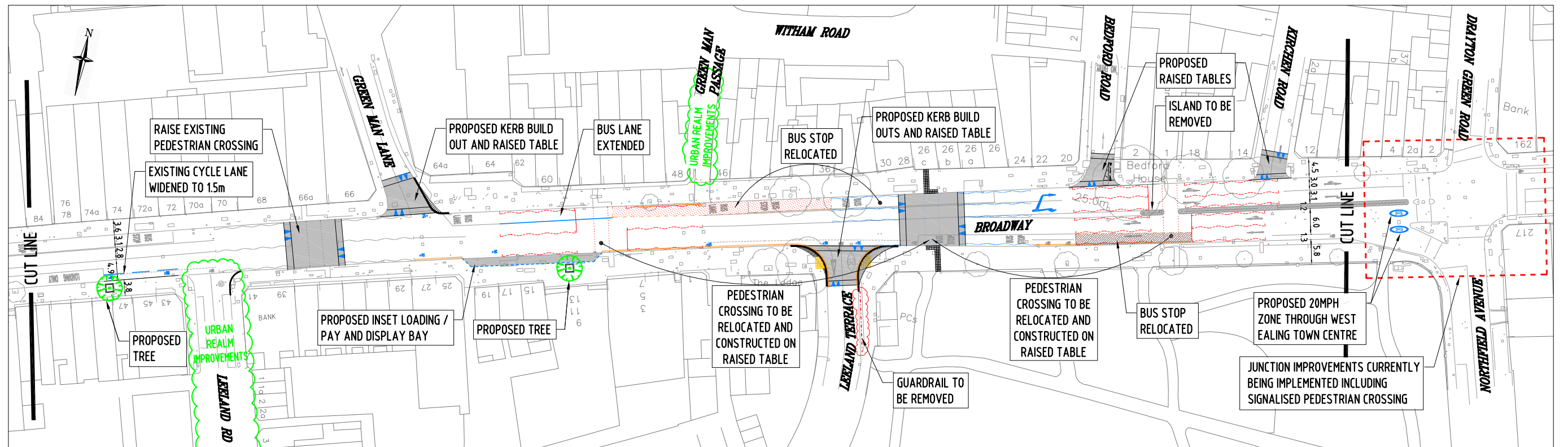
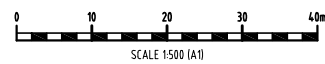


LAYOUT 1



LAYOUT 2



Revision	Amendment	CHECKED ON	APPROVED ON	DRAWN BY <b>E MACALINTAL</b>	ORIGINATOR <b>LONDON BOROUGH OF EALING COUNCIL</b>	SCHEME NO. <b>SO1395</b>	 London Borough of Ealing Council Highway Lighting Department Percival House 14-16 Unshidge Road Ealing London W5 2AL
				DATE	PROJECT <b>GENERAL ARRANGEMENT CORRIDOR 1C WEST EALING</b>	PURPOSE <b>FEASIBILITY</b>	
				CHECKED BY <b>S PARKINSON</b>		SCALE <b>1:500 @ A1</b>	
				DATE	SHEET NO. <b>1</b>	REVISION <b>A</b>	
				APPROVED BY <b>T SINGH</b>	DRAWING NUMBER <b>SO1395-100</b>		Reproduced from the Ordnance Survey mapping with the permission of the Controller of Her Majesty's Stationery Office © Crown copyright. Unauthorised reproduction infringes Crown copyright and may lead to prosecution or civil proceedings. London Borough of Ealing, Licence No. 086355 2001
A	ORIGINAL ISSUE			DATE			